

Burning heat.. In this hot summer, with a nice cool breeze

Let's make it **cool and safe** **Water · Shade · Rest**



It is essential to **take a break** from work when it is hot.

Cool water

Near the worksite
cool water shall be provided



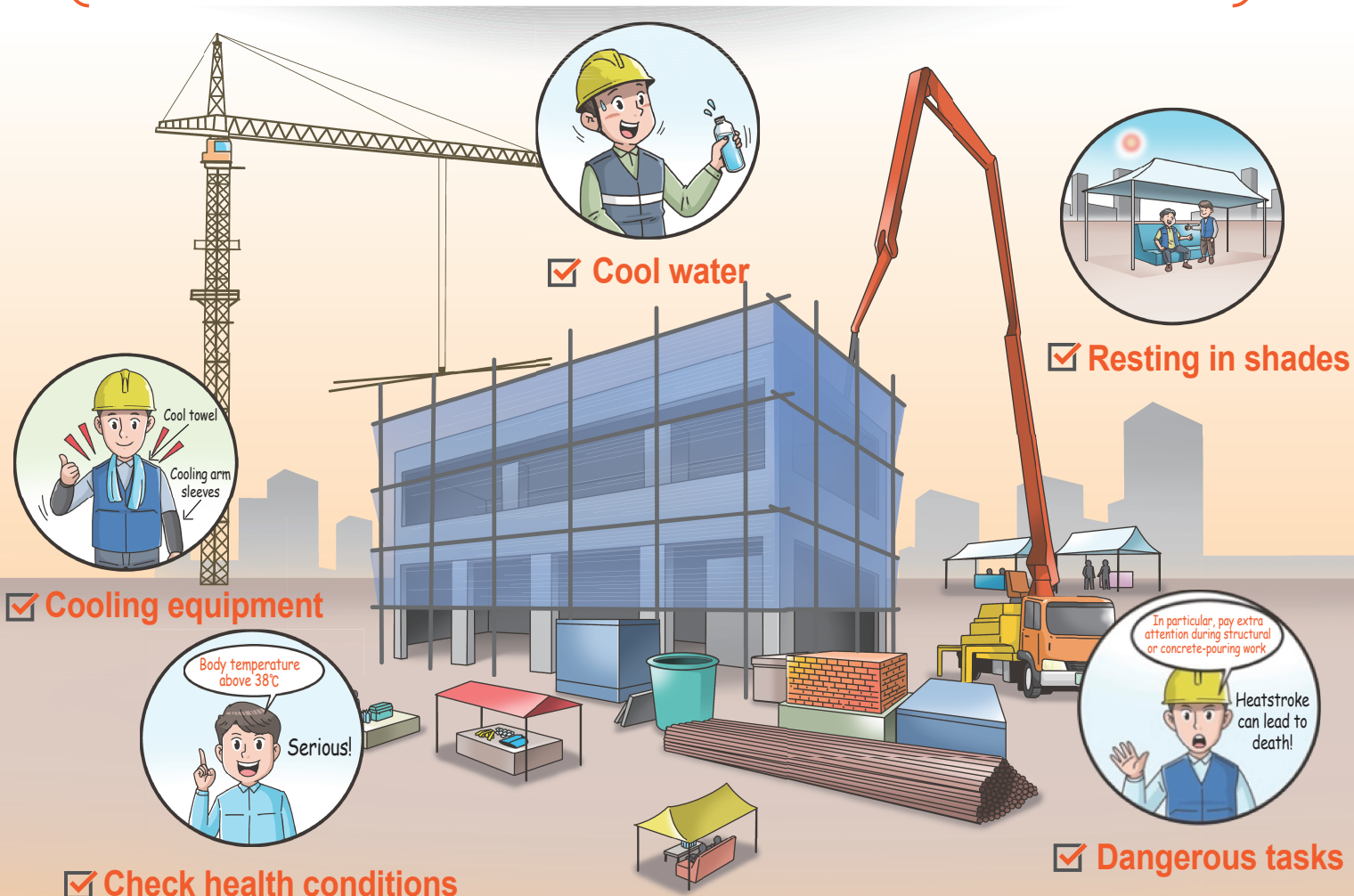
Cool spaces

shade canopies, and other places for rest
should be provided



Breaktime

During the hours of high temperature
adjust the workload and rest



In case of emergency, **call 119**  **send them to a hospital.** 

✚ In case of a heat-related illness patient ▶ call 119 ▶ take emergency measures until the rescue team arrives ▶ send them to a hospital

✚ Contact number in case of emergency:



For more details,
use the QR Code
and refer to the heat-related illness
prevention guideline.



Ministry of
Employment and Labor



Let's make it **cool and safe** Water · Wind · Rest



Apparent ("Feel-like") Temperature can be lowered through **regular air ventilation**.

Set/maintain temperature range

Set the range of temperature, and try to maintain the temperature within the range



Wind (air ventilation)

Regular ventilation or installing a zone cooling system



Recess hours

During the hours of high temperature lesson the workload and rest

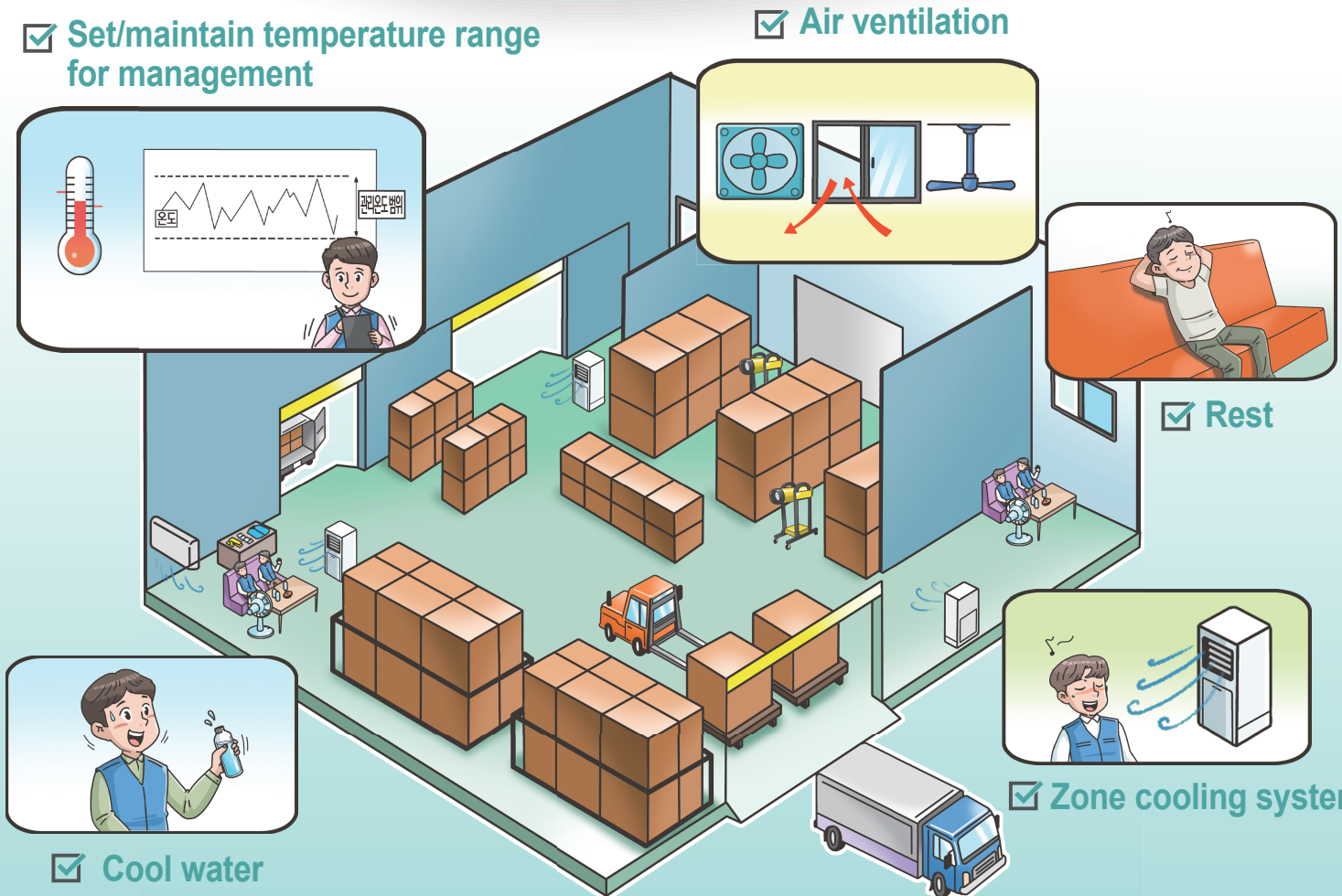
✓ Set/maintain temperature range for management

✓ Air ventilation

✓ Rest

✓ Zone cooling system

✓ Cool water



In case of emergency,

call 119



send them to a hospital.



✚ In case of a heat-related illness patient ▶ call 119 ▶ take emergency measures until the rescue team arrives ▶ send them to a hospital

✚ Contact number in case of emergency:



For more details,
use the QR Code
and refer to the heat-related illness
prevention guideline.



Ministry of
Employment and Labor

KOSHA